

# TRANSAS

## TRANSAS PILOT PRO

### INNOVATIVE EXPERIENCE

Utilising our  
expertise  
to transform  
your experience in  
piloting

### GLOBAL

Over 500 pilots  
from 30 countries  
engaged in  
development  
and testing

### OPEN

Transas has over  
300 direct  
communications  
with pilots  
every month



# BE PART OF IT!

# TABLE OF CONTENTS

04

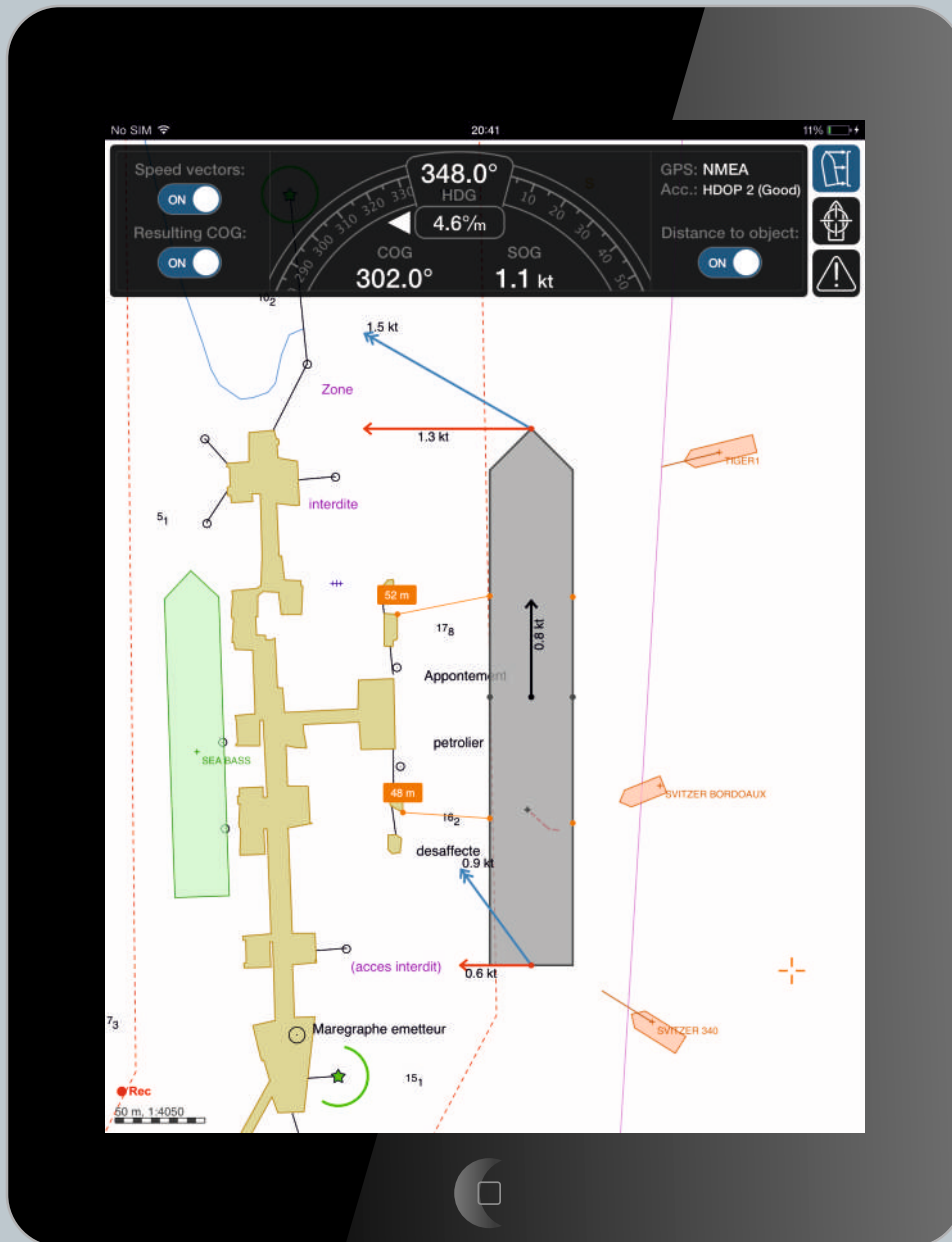
05

06

07

08

10



---

**GENERAL  
INFORMATION**

**TRENDS IN  
MARITIME PILOTING**

**MAIN  
BENEFITS**

**PILOT PROFESSIONAL  
FUNCTIONS**

**RECOMMENDED  
SCOPE OF SUPPLY**

**SOFTWARE AND HARDWARE  
REQUIREMENTS**

**TRANSAS PILOT PRO  
'STANDARD'**

**CHARTS AND  
CHART UPDATE**

**PILOT PRO  
FUNCTIONALITY**

**OUR CUSTOMERS**



# GENERAL INFORMATION

---

The Transas Pilot PRO App has been developed specifically to meet the needs of pilot organisations and marine professionals. With a carefully considered range of support functions, the system is designed to assist pilots and other marine professionals in their daily routine, helping them to maintain efficient pilotage and other onboard operations.

The packages were developed based on our engineers expertise, intensive market research and interviews with pilots.

We aimed to get the “global big picture” on localized needs in pilotage. To achieve it we contacted 10 experienced managers of Transas network and 88 pilots - testers of our Transas Pilot PRO (focus group). We engaged pilots with various professional experience in harbour, inland waterways

and canals. In total the focus group pilots perform 26,378 pilotage missions per year (on average 299 per pilot) and meet 22,716 Captains on ship board per year (on average 258 per pilot).

Our focus group was selected from a number of locations, including Australia, Argentina, Brazil (Amazon river), United Kingdom, Germany, Gibraltar (Spain), Netherlands, Denmark, Egypt (Suez canal), Spain, Canada (St.Lawrence river), China, Colombia, Mexico, New Zealand, Pakistan, Panama (Panama canal), Russia, Singapore, USA, Trinidad and Tobago, France, Italy, Croatia and Sweden.

Transas believes that putting the needs of today’s pilot at the centre of our product is the only way to achieve excellence in this fast-moving technology industry.

**TRANSAS PILOT PRO WAS DEVELOPED BASED ON OUR ENGINEERS EXPERTISE, INTENSIVE MARKET RESEARCH AND INTERVIEWS WITH PILOTS.**

## **TRENDS IN MARITIME PILOTING**

There is a strong belief that pilots will be soon using tablet devices. Demand and interest has been demonstrated by over 3500 product downloads and customer authorisation requests for the beta version of the Transas Pilot PRO.

Bad visibility and weather conditions, unknown ship equipment, or blackouts...these and many other challenges pilots meet and tackle in everyday work. One of the driving principles behind Transas Pilot PRO is to provide the simplicity, efficiency and reliability when the action is on.

## MAIN BENEFITS

- Easy system setup and use to reduce the stress – Plug & Play kit
- Pilot-requested specific functions for professional day-to-day work
- Pilot wireless freedom on the bridge
- Light weight
- Long battery lifecycle for tablets
- Pilot mobility and advanced functionality

## PILOT PROFESSIONAL FUNCTIONS

- Essential information transfer via AIS Wi-Fi for vessel contour presentation with motion vectors
- Enhanced functionality of the manoeuvring predictor
- Docking & Mooring operation mode
- AIS vessel dimensions and presentation of the AIS GPS position in the ownship contour
- Presentation of fore'n'aft motion vectors and Rate-Of-Turn information
- Display of extended information on AIS targets: Class A & Class B
- Navigational Alarms
- Colour indication and sound signals for alarms and warnings
- ERBL: Point-To-Point and Own Ship ERBL
- Others, specified under 'Pilot PRO Functionality' section below (see page 8).

**WHEN SOMETHING EXCEPTIONAL  
HAPPENS, YOU NEED TO BE  
READY TO ACT IN A SECOND**



## RECOMMENDED SCOPE

- Transas Pilot PRO software
- Apple iPad mini or iPad (recommended Generations 4/Air), IOS 7.1.2 or higher. Ready for iOS8
- Transas Pilot AIS Wi-Fi Interface (incl. Pilot Plug and Wi-Fi gate)
- 3rd party Bluetooth GPS sensor - recommended for backup positioning purposes.
- Waterproof Pilot Bag and Power Supply (international plug & inlet) for backup charging purposes.

## SOFTWARE AND HARDWARE REQUIREMENTS

### Hardware

- iPad Wi-Fi or iPad mini Wi-Fi
- iPad Wi-Fi + Cellular or iPad mini Wi-Fi + Cellular (Recommended)

### OS Version

IOS 7.1.2 or Higher. Ready for the iOS 8

### Screen Resolution

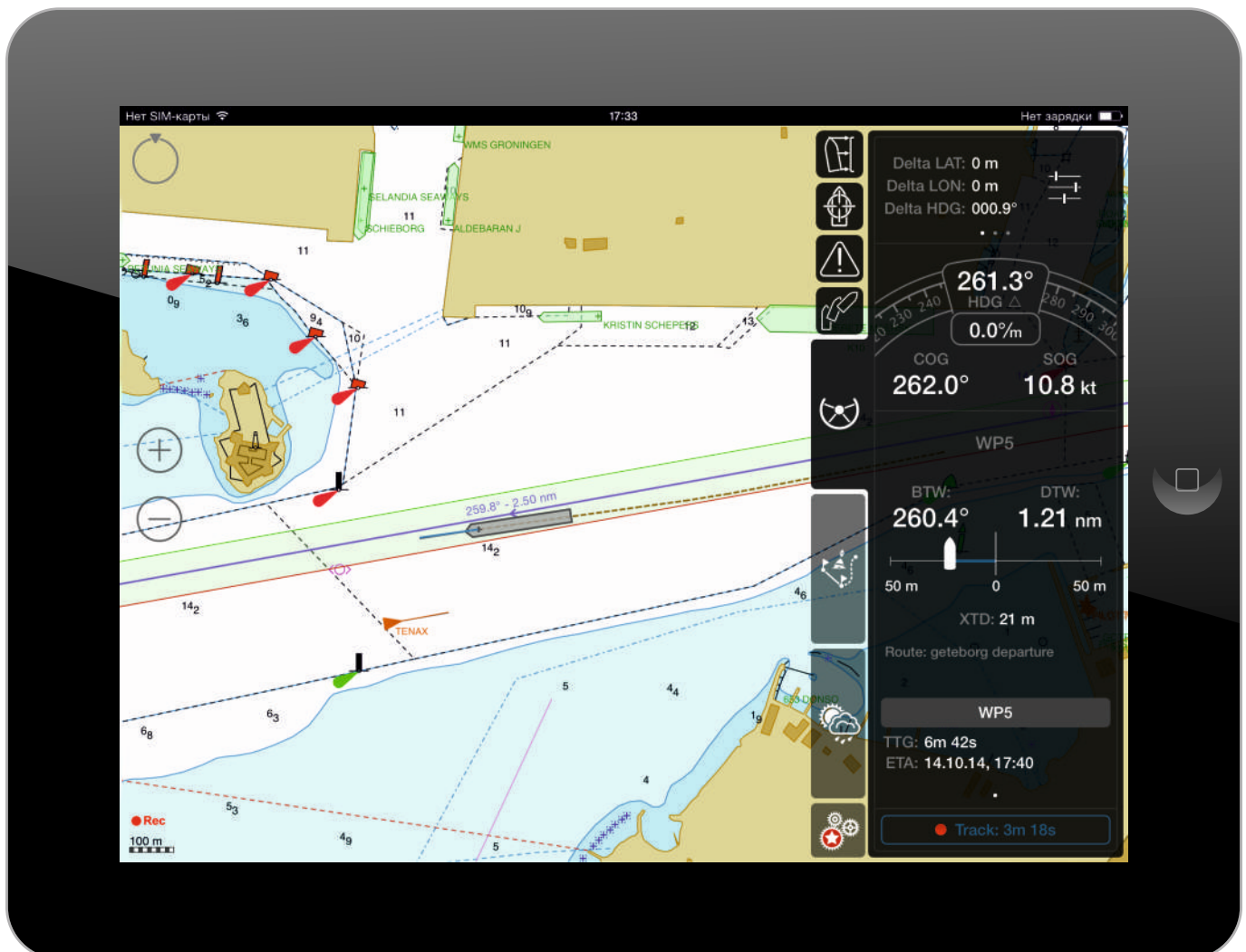
iPad (Generation 3, 4, Air, New iPad mini - "Retina"): 2048 x 1536

iPad (Generations 2), mini iPad: 1024 x 768

### Interface Language

English as International Maritime language by default.

(additionally supported: Russian, Chinese, Spanish, German, French, Italian and Korean)



# TRANSAS PILOT PRO 'STANDARD'

## CHARTS AND CHART UPDATES

### CHART FORMAT

- **Vector TX-97 Chart Format and Update:**

The production of TX-97 data is organized according to the ISO 9001 product quality management standard. TX97 Chart folio for Pilots is produced from the official S-57 data or paper charts and supported with the monthly correction service as well. The Special Chart folio and data can be discussed between a local Port & Pilot authority and Transas Ltd.

- **TX-97 Charts Update:**

The chart updating assumes the monthly renewal of the ordered chart folio, and incorporates changes made in the World Chart Folio Update. Charts are updated directly to iPad with Pilot Pro bypassing the iTunes software on PC/Mac.

## PILOT PRO FUNCTIONALITY

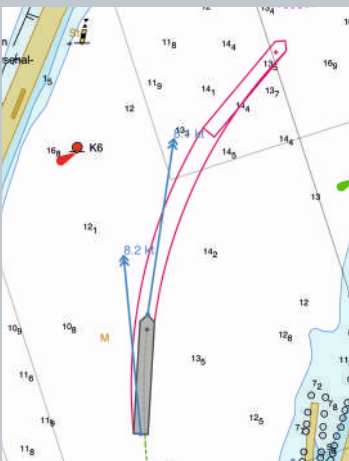
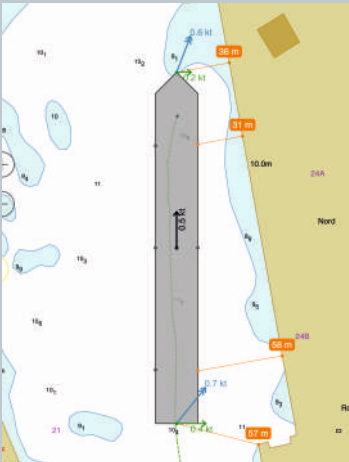
Three main operational layouts are available:

### DOCKING MODE

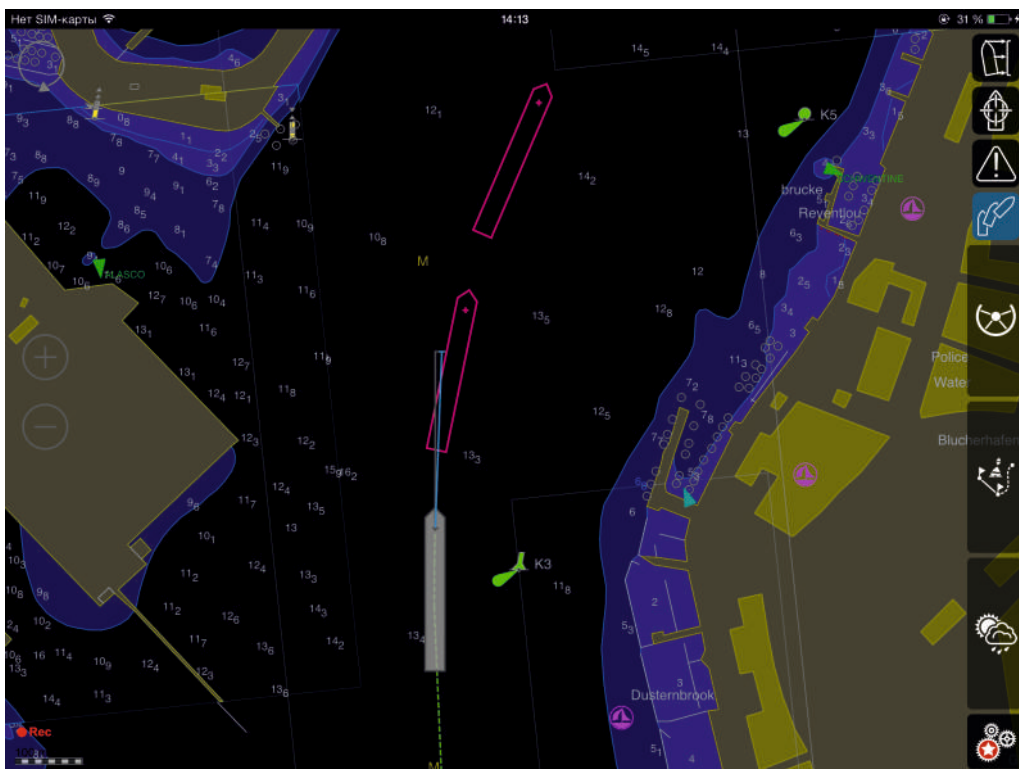
- This mode is intended for mooring operations.
- Operates in Portrait or Landscape device mode. Chart orientation can be selected by pilot.
- Option to toggle ON / OFF the 'Predictor' functionality, the 'Distance-To-Object' functionality, and the Docking Mode speed vectors: longitudinal and transverse speed vectors or Fore-and-Aft resulting COG vectors.

### ROUTE MONITORING

- Intended for Route Monitoring purposes, during High Sea pilotage and approaches to harbours (i.e. before activation of the Docking Mode)
- Scalable ship vectors are supported for the own ship and AIS targets (1-24 min)
- Own ship sensor data is presented on the display (LAT, LON, COG, SOG, HDG and ROT, if available)
- Route Monitoring data is also presented on the display (Route Name, WP Name, Bearing to WP, Distance to WP, XTD bar and value, Time-To-Go and ETA)
- Simplified Schedule Information data to selected WP is available: ETA to Selected WP, TTTG to Selected WP.
- Alarm management is applicable for the following alarms and warnings: Sensor Alarms, low accuracy warning, XTD limit, WP approach, switching to the next WP, Anchor Watch, CPA/TCPA and others.







## PLANNING TOOLS

Intended for Route Planning and editing, Track and User Object Management. User Object database and object plotting on the chart.

### Route Planning functions:

- Main controls allow following operations with routes and schedules: Create New Route, Select any route for the monitoring or edit existing route:
- Schedule calculation
- WP editing: XTD, turn radius and speed on leg.

Converting the route table into \*.GPX, \*.KML or \*.KMZ formats available (Route Export & Import).

### User Object functions:

- Object adding via 'Advanced Cursor' tool on the chart layer.
- Object searching and filtering via List of Objects.
- Coordinates editing in the digital form.
- 'Focus on Chart' function, changing of the Object type.

Converting the User Object(s) into \*.GPX, \*.KML or \*.KMZ formats is available (Objects Export and Import).

### Track Management functions:

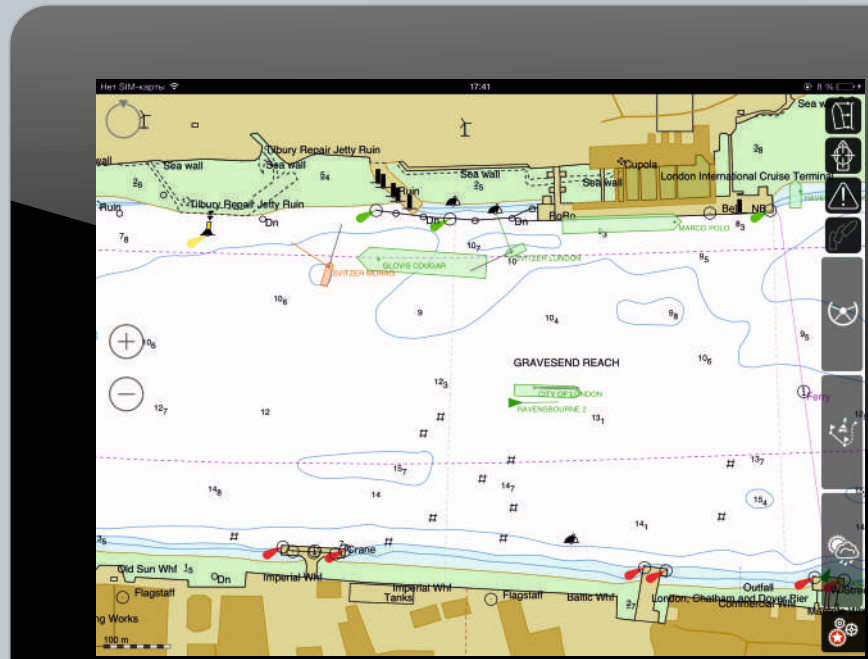
- Track searching and management via List of Tracks.
- Focus on Track' function.
- Changing of the track color.
- Track information, including Start and End Time, duration and total distance.

Converting the Track(s) into \*.GPX, \*.KML or \*.KMZ formats available (Track Export and Import).

## ADDITIONALLY

- Day and Night modes.
- Multi-unit Support

(continued on the next page)



### ERBL

Transas Pilot PRO uses ERBL for measuring bearings and ranges. There are two independent ERBL available in Transas Pilot PRO for measurements on the electronic chart: Own Ship ERBL and Point-To-Point ERBL.

### Info Function

Info about charts, user objects, AIS targets.

### Chart Orientation control

Charts may have the following stabilization on the Transas Pilot PRO chart panel:

- North UP (Default mode).
- Head Up - applicable, if a valid Heading data is available for the Transas Pilot PRO
- COG Up - applicable if a valid COG data is available for the Transas Pilot PRO.
- Route Up (may be used with the selected route only).

### Sensors

Sensors connection can be performed:

- Via Wi-Fi Router and Pilot Plug to the AIS Transponder Class A.
- Using NMEA ROT & HDG Data via the same Wi-Fi connection.
- Via Bluetooth to the compatible GPS/GNSS receiver for Backup purposes;
- Using internal GPS receiver for backup purposes (only iPad with 3G/Cellular)
- Using Wi-Fi/3G triangulation – just for the coarse positioning, not applicable for navigation
- Precisely calculated ROT is also available based on incoming Heading data.

### AIS Transponder Interface

AIS transponder interface is implemented in accordance with IEC 61993-2 international standard and takes into account IALA Technical Clarifications on Recommendation ITU-R M.1371-1 (Edition 1.3). Interfacing of this device with the Transas Pilot PRO app produces the following capabilities:

- to receive and display AIS Class A, AIS Class B, Base stations, Aids-to-navigation targets and their data (coordinates, name, MMSI, IMO number, ship's navigation status, ship's type and nature of cargo, speed, etc).
- to use AIS Class A as the primary positioning system during pilotage.

and many other functions

AN INNOVATIVE, GLOBAL AND OPEN  
EXPERIENCE! BE PART OF IT!



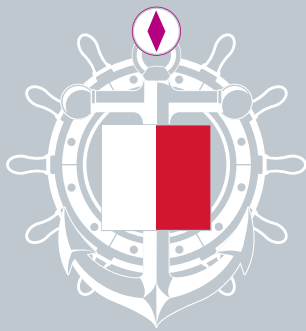
TRANSSAS  
PILOT PRO

## OUR CUSTOMERS



and others

MEET THE NEW ERA  
OF PILOTAGE TOOLS  
AND SOLUTIONS!



TRANSAS PILOT PRO

TRANSAS

E-mail: [support@transaspilot.com](mailto:support@transaspilot.com)

[WWW.TRANSAS.COM](http://WWW.TRANSAS.COM)

[WWW.TRANSASPILOT.COM](http://WWW.TRANSASPILOT.COM)

**Do you want to try Pilot PRO yourself?**

**Contact us at [support@transaspilot.com](mailto:support@transaspilot.com)  
to get a free 1-month trial version!**

**The offer is valid for all UKMPA 2014 participants,  
as well as for all other Pilot associations and Port  
authorities of the world.**